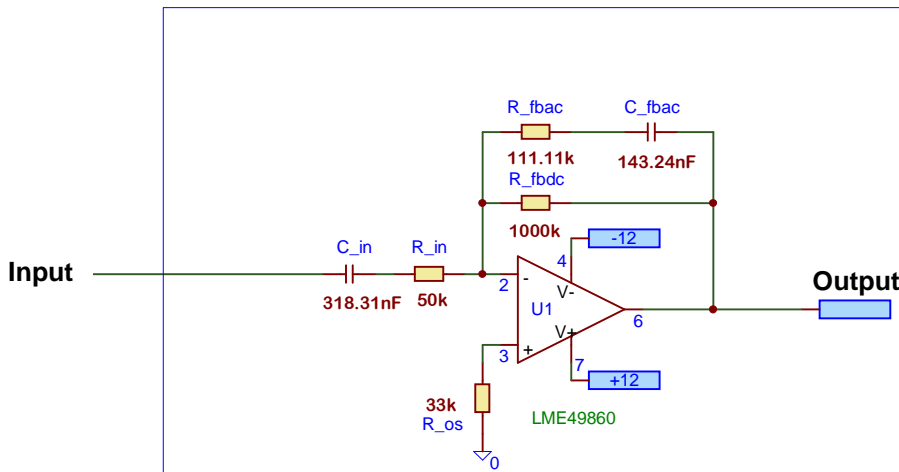
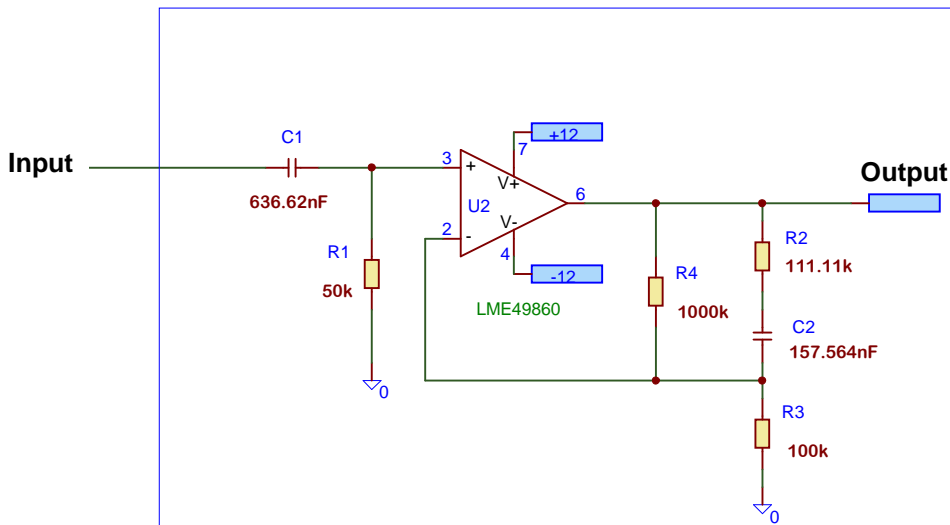


Audio analog compensated inputs (inverted and non-inverted) and output schematics at equal F_c (-3dB) parameters.



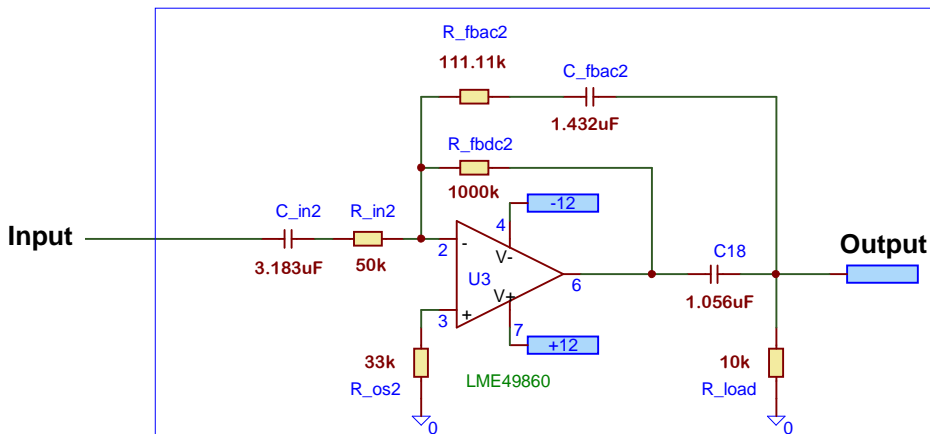
Gain=2.0
 F_{c_3dB} =1.00Hz;
 R_{in} =50.00kΩ;
 T_{in} =15.9155ms;
 $K_{FBDC/FBAC}$ =9.0;
 C_{in} =318.31nF;
 C_{fbac} =143.24nF;

Compensated input. Inverted schematics.



Gain=2.0
 F_{c_3dB} =0.873Hz;
 R_{in} =50.00kΩ;
 T_{in} =31.831ms;
 $K_{FBDC/FBAC}$ =9.0;
 C_{in} =63662nF;
 C_{fbac} =157.564nF;
 $C_{in}=2 * C_{in}$ Input-Invert.

Compensated input. Non-inverted schematics.



Gain=2.0
 F_{c_3dB} =1.231Hz;
 R_{in} =50.00kΩ;
 T_{in} =159.15ms;
 $K_{FBDC/FBAC}$ =9.0;
 C_{in} =3.183uF;
 C_{fbac} =1.056uF;
 $C_{in}=10 * C_{in}$ Input-Invert

Compensated Output schematics.